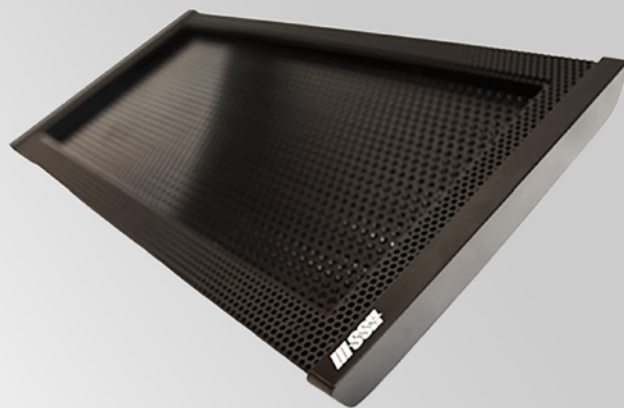


Directional audio speakers with both brains and beauty

HyperSound® is an innovation in audio that generates an ultrasonic beam of sound. Similar to how a flashlight controls a ray of light, HyperSound beams sound so only those in the targeted listening area can hear it. Slim speaker design makes integration into applications easy. Innovative audio technology makes it a uniquely effective solution for adding audio to even acoustically challenging environments.



HyperSound speakers are specifically designed for applications within retail, trade show, kiosk and digital signage environments.

SOUND INNOVATION

HyperSound's narrow sound beam limits audio to a specific location, creating a precise audio zone. Clear, engaging audio enhances customer experiences by making marketing messages more immersive, informative, memorable, and attention-grabbing.

Small speaker size and slim design make integration into digital applications easy

Ability to target each ear separately produces an immersive 3D listening experience

Highly directional, precise sound beam creates audio zones and eliminates sound bleed

HyperSound Speaker

Ultrasound Beam

Traditional Speaker

Audible Sound

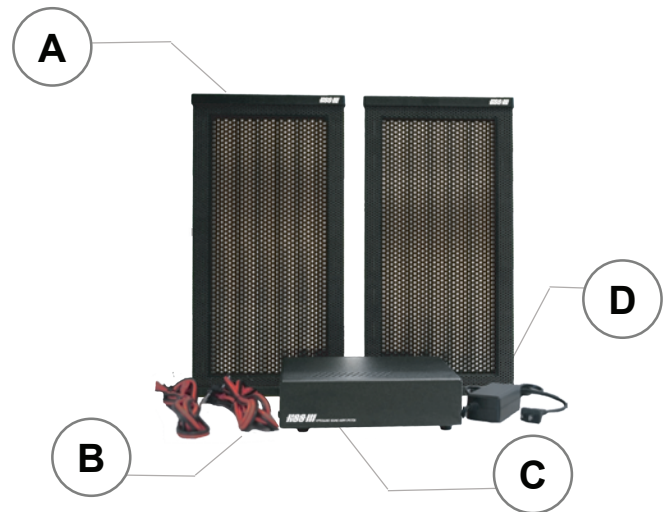


Unlike traditional loudspeakers, HyperSound generates audible sound along an ultrasonic beam which is highly directional and maintains sonic clarity and intelligibility over longer distances.

WHAT'S INCLUDED:

		MONO SYSTEM	10-3004-01-00 (BLACK) 10-3004-01-01 (WHITE)	STEREO SYSTEM	10-3003-01-00 (BLACK) 10-3003-01-01 (WHITE)
A	1	HyperSound Speaker		2	HyperSound Speakers
B	1	Set of Red & Black Speaker Cables with Banana Connectors and Audio Cable		2	Sets of Red & Black Speaker Cables with Banana Connectors and Audio Cable
C	1	Amplifier		1	Amplifier
D	1	30 volt DC Power Supply		1	30 volt DC Power Supply

For pricing inquiries,
please call (888) 477-2150



PRODUCT SPECIFICATIONS

Electrical:

AC power cord length:
1.5 meters (5 feet)
Speaker cord length (14AWG):
2 meters (6.5 feet)
Universal power supply:
Input: 100V-240V-50/60 Hz
Output: 30V DC @ 1.5 amps

Mechanical:

Speaker dimensions:
12.5 x 6.375 x 2.125 inches
HSS-3000 amplifier box:
6.25 x 6.75 x 1.875 inches

Unit Weight:

7.4 pounds (3.4 kg)
(per complete system)

Colors:

Black - Standard
White - Standard

Environmental:

Operating temperature:
10°C to 40°C (50° to 104°F)
Storage temperature:
-20°C to 50°C (-4° to 122°F)
Operating humidity range:
0 to 95% (non-condensing)
Storage humidity range:
0 to 95% (non-condensing)

System:

Max audio SPL output:
(single emitter)
100dB @ 1.5 kHz/2
meters

Audio:

Impedance:
10k Ohms
Input connectors:
1 RCA style connector
(per channel)
Speaker cable connectors:
2 banana style connectors
(per emitter)
Powered subwoofer output:
1 RCA style
System configuration:
Stereo 2 channel or mono
Max input for max output:
160 mVrms per channel
Frequency response:
300 Hz to 18kHz

Ultrasonic and DSP Processing:

Carrier frequency:
Proprietary in range of 40 kHz
Modulation method:
Proprietary and patent
pending processing

Ultrasonic Speaker Type:

HyperSound proprietary, patented and
patent pending monolithic film
transducer

Power Amplification:

Amplifier type:
Customized Class D digital
Amplifier power output: 15 watts

Specifications are subject to change
without notice.

